



The Lifestyle Collection

Bi-fold, French and patio doors



welcome to The Lifestyle Collection

Let's bring the outside in...



Because your home makes a personal statement about you, we know that you want it to look its best. The Lifestyle range of bi-fold, French and patio doors will transform, modernise and add value to your home, whilst you see the benefits of a lighter, brighter environment and enjoy the feeling of more space.



A versatile choice of styles and colours mean your doors will complement the existing design of your home, providing a smooth transition between indoors and outdoors. Whether you want maximum opening width, traditional French elegance or smooth, simple lines, nothing makes a better impression than a beautifully crafted, Lifestyle door.

Bi-fold doors

Enjoy the luxury of contemporary living

Liberate your home

Imagine open, wide spaces allowing air and light to flood into your home, instantly generating a contemporary look and feel. Made to provide maximum viewing areas, our bi-fold doors add the 'wow' factor to any property and can be installed where you require clear access to your patio or garden.

Improve your lifestyle

Amazingly flexible, with various fold options, you can open up an entire area during warm summer days or partially fold-back depending on the amount of fresh air and space you require. When closed, bi-fold doors offer shelter and warmth with no reduction in natural light, allowing you to stay connected to the outside from the comfort of your home.

Enjoy modern living

With a choice of designs and guaranteed high-quality performance, our bi-fold doors bring you the space, comfort and low-maintenance luxury of modern living. Discover why more and more people are choosing Lifestyle bi-fold doors to add that extra dimension to their homes.

Completely versatile to meet all your requirements, bi-fold doors offer a range of features to add beauty and value to your home





Versatile space at its best

Whatever your preference of door style, we go to great lengths to ensure that every aspect of a Lifestyle door is manufactured and presented to the highest quality. Tested to BS7412 standards, we know that our doors meet all the Building Regulations requirements, that's why we offer a full 10-year profiles guarantee on all our Lifestyle products.

Choose a door from the Lifestyle collection and create a stylish, value-adding feature to your home whilst you enjoy the feeling of space, light and luxury living. All products can be manufactured in alternate colours not shown in this brochure, please ask for details.



White



Cream



Golden Oak



Rosewood



Grey



White Ash*



Irish Oak*

* Available in Ovolo style only



Improve your lifestyle

Our stylish doors are an excellent complement to patio or French doors and the ideal finish for conservatories. Their high-quality manufacture means they can be installed anywhere that you require a clear, wide access to your patio or garden. Bi-fold doors will create the perfect summer ambience, but it's just as vital that they can withstand the harsh British winter. Our doors are manufactured with a square-edge profile. This gives a superior seal along door edges making them completely draught and weatherproof.

Manufactured to BS7412, our doors meet the British Standard minimum requirements for construction, security, safety, weather-tightness and strength of performance. This means behind its striking looks, your door is robust and built to last all-year-round.

Smooth, stylish designs

Lifestyle doors are designed for maximum visual impact, whether open or closed. Their slim profile provides a fantastic open view and, when fully open, our doors are extremely compact, enabling easy access between your home and the outside world. An easy glide, bottom rail concertina mechanism allows for a smooth, elegant entrance every day. With stunning aesthetics and an elegant design, Lifestyle bi-fold doors make the ultimate entrance to contemporary living.

A style to suit your home

With a choice of contemporary colours and styles, you can create a look that is perfect for your home. Whether you want to match your existing décor, or make a stylish contrast, our doors offer the ultimate walkway from indoor to outdoor living.



Expertly crafted, a Lifestyle bi-fold door blends confidently into its environment



A choice of fold options and opening styles means your door can be tailored to suit you



Extensive openings up to 6.5 metres wide maximises ventilation and natural light



The slim, square edge door profile gives attractive looks and maximum glass area

French doors

Classic looks and modern performance



Transform and enlighten your home

Lifestyle French doors are ideal for a wide range of uses, particularly where a traditional feel is required. Beautifully suited to open up conservatories or to make a unique design statement within your home, our doors have a classic appearance with all the benefits of contemporary PVC-U double-glazing.

Co-ordinated charm

When you choose from the Lifestyle range, 'sight lines' are designed to match the windows of your home. This means you can easily achieve a consistent style and still retain the individual character and appeal of your doors.

◀ French doors integrated into conservatory design



▲ French doors in Golden Oak with Gold furniture



Perfect for conservatories,
French doors provide the
perfect lead into your garden

Individual design

A choice of frame styles – Chamfered or Ovolo and a choice of opening options mean you can tailor the finish of your French doors to your individual taste. Inward opening allows you to make the most of your patio space or you can maximise your indoor areas with an outward opening mechanism.

A seamless transition

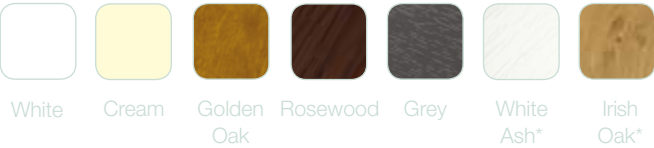
For a smooth, seamless transition between outdoors and indoors, we can design your French doors with a low threshold. This enables easy access to your home particularly for prams and wheelchair users. It also means your doors are fully compliant with Part M of the Building Regulations – so nobody will have any complaints when they cross over your threshold.

Low-maintenance living

We know how stunning your French doors will look and that you will want to keep them looking that way for years to come. In addition to a full 10-year profiles guarantee, we also fit our doors with convenient easy to clean internal rebates, so you know your door will look its best with the minimum of effort.

Stylish versatility

Flexible and sophisticated, Lifestyle French doors are available in a range of sizes up to 2 metres wide, providing an impressive entrance to your garden. A tasteful choice of colours allows your doors to complement your home or conservatory. Whether you are looking for classic white or elegant cream, or if you prefer the natural appearance of rosewood or golden oak, we have a style that's right for you.



* Available in Ovolo style only



Patio doors

Enjoy the beautiful practicality of patio doors



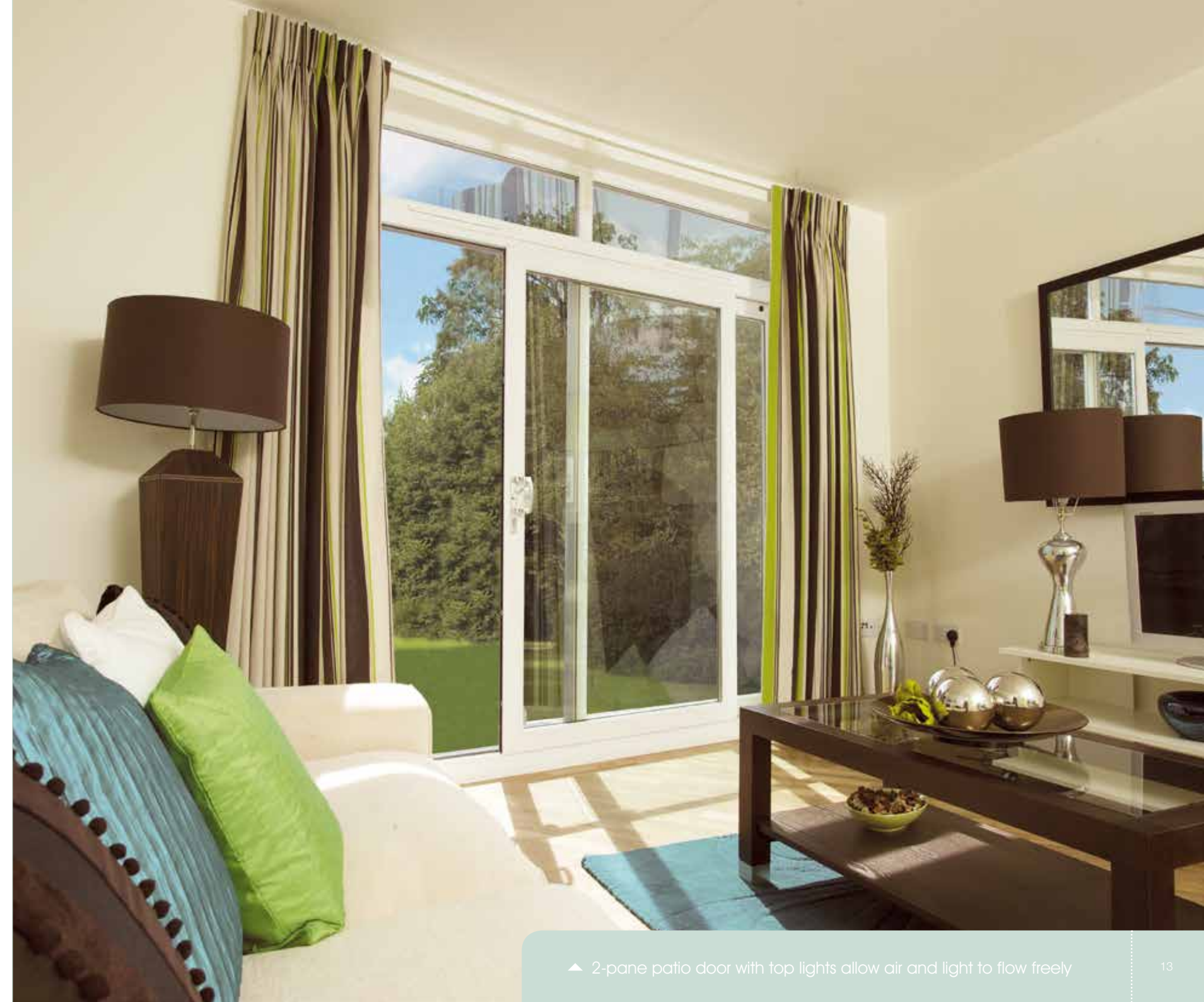
Practical with a stunning appearance

When you want to maximise your view of the outside and benefit from more natural light within your home, Lifestyle in-line patio doors make the ideal solution. Practical and versatile with a stunning classical appearance, they have been the customer's choice for decades.

A versatile classic

Lifestyle patio doors provide the ultimate flexible system. With a choice of 2, 3 and 4 pane doors available and the option of added side windows, the design of your doors is only limited by the size of your property.

◀ 2-pane patio doors in Grey



▲ 2-pane patio door with top lights allow air and light to flow freely

Patio doors
increase
natural light
into your room



Available with a
range of stylish
handle options



Ideal for rooms
leading into
a conservatory



Featuring the
latest high
security locking
systems



Designed and built to the highest standards, our patio doors will operate smoothly for many years and are backed by comprehensive guarantees

The perfect entry

Lifestyle patio doors make the ideal entry solution in any situation. They are perfect for leading into your garden space, or for rooms leading into a conservatory.

Easy glide rollers and high-quality manufacture mean they will stand the test of time and continue to add value to your home for as long as you need them.

The finishing touch

The design of your patio door isn't complete until you've selected the right furniture to compliment its style. That's why our high-quality door furniture is available in a range of colours so your doors will improve and enhance their surroundings.



White



Cream



Golden
Oak



Rosewood



Grey**



White
Ash*



Irish
Oak*

* Available in Ovolo style only ** Colour option subject to longer lead times

Space, light and peace of mind

Whatever your preference of door style, we go to great lengths to ensure that every aspect of a Lifestyle door is manufactured and presented to the highest quality. Tested to BS7412 standards, we know that our doors meet all the Building Regulations requirements, that's why we offer a full 10-year profiles guarantee on all our Lifestyle products.

Choose a door from the Lifestyle collection and create a stylish, value-adding feature to your home whilst you enjoy the feeling of space, light and luxury living. All products can be manufactured in alternate colours not shown in this brochure, please ask for details.





The Lifestyle Collection

Broaden your horizons – choose a Lifestyle door manufactured with Eurocell profiles

Product specification is subject to change without notification. Please also note that colours shown are illustrative only, as the printing process does not allow 100% accurate colours to be reproduced.

LIFESTYLEDB/AUG14/H&S



All together better